

RF probes

Measuring probes for measurement of forwarded and reflected power.

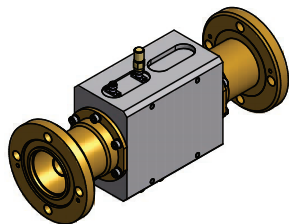
SND 8003, SND 8004 and SND 8005 are made of aluminium and are suitable for indoor use.

All SND xxxx-IP68 are compliant with standard IP68. They are made of high quality silverplated brass and are fully resistant to adverse weather conditions. They can also be used submerged into water.

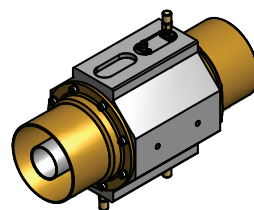
Features:

- Impedance 50 Ohm
- Input return loss > 30 dB
- Coupling return loss > 30 dB
- Directivity > 30 dB
- Temperature range -10 to +50 °C (SND 8003, 8004 & 8005)
-40 to +80°C (IP 68 - outdoor applications)
- flange and fast line socket RF connection

Type	Code	Connector
SND 8003	50226	EIA 7/8" flanged
SND 8004	50247	EIA 1 5/8" flanged
SND 8005	54470	EIA 3 1/8" flanged
SND 8003 FLS	89296	EIA 7/8" fast line socket
SND 8004 FLS	89294	EIA 1 5/8" fast line socket
SND 8005 FLS	89298	EIA 3 1/8" fast line socket
SND 8014 - IP68	48626	EIA 1 5/8" flanged
SND 8005 - IP68	48523	EIA 3 1/8" flanged
SND 8009 - IP68	48496	EIA 4 1/2" flanged
SND 8015 - IP68	48627	EIA 5" flanged
SND 8016 - IP68	48628	EIA 6 1/8" flanged



SND 8004 EIA 1 5/8"



SND 8005 FLS EIA 3 1/8"



SND 8009 - IP68 EIA 4 1/2"