

coaxial connectors type EIA

IEC 339, EIA RS-225

These quality connectors and additional supporting elements are the result of decades of experience. The whole range is designed to withstand severe environmental conditions. Precise manufacturing enables solid connections and low intermodulation (IMD) products.

The EIA family of coaxial connectors are available in 7/8", 1 5/8", 3 1/8", 4 1/2" and 6 1/8", all of which are suitable for RF applications. They support cables with foam dielectric and air-dielectric cables.

Connectors are delivered with an added inner conductor, and most are 'straight type' connectors.

Supporting elements such as couplings, gas barriers and gas inlet valves are also available for a complete installation solution.

technical data

Impedance	50 Ohm
Dielectric	PTFE
Body	CuZn
Contacts	CuBe, CuSn
Surface finish	Contacts - silver or gold plated Body - nickel or silver plated
Temperature range	from - 65°C to +165°C (Climate category according IEC 6855/155/56)

dimensions of the coaxial lines

STANDARD		DIMENSIONS (mm)				fc (GHz) Z = 50 Ohms
339 IEC	EIA	A	B	C	D	
50-22	7/8"	22,23	19,95	8,70	7,40	6,68
50-40	1 5/8"	41,30	38,90	16,90	15,00	3,43
50-80	3 1/8"	79,40	76,90	33,40	31,30	1,73
50-105	4 1/2"	106,00	103,00	44,80	42,80	1,29
50-155	6 1/8"	156,00	152,00	66,04	64,01	0,87



Elti connectors are suitable for all major cable manufacturers. Each type of connector suits designated cable type. The only difference is at foam cable 7/8". RFS produces this cable with larger inner diameter; therefore inner is rather different than from other suppliers. When ordering specify for which cable the connector is required.

This charts will help you find the product you are looking for.

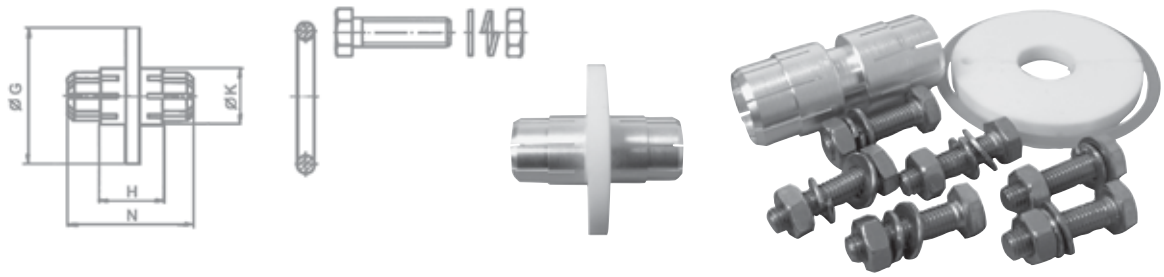
EIA 7/8"					
RG 213/U RG 214/U	CEL 50-22-081				
RG 177/U RG 218/U	CEL 50-22-071				
EIA 7/8"		EIA 1 5/8"	Foam cables are suitable for following manufacturers:		
foam 1/2"	CEL 50-22-816 CEL 50-22-818	CEL 50-40-820	<ul style="list-style-type: none"> • Andrew • RFS • Dielectric • SUHNER • EUPEN • Nokian 		
foam 7/8"	CEL 50-22-827 CEL 50-22-827/ RFS-JA	CEL 50-40-828 CEL 50-40-828/ RFS-JA			
foam 1 5/8"	CEL 50-22-835	CEL 50-40-836			
EIA 7/8"		EIA 1 5/8"	EIA 3 1/8"	EIA 4 1/2"	EIA 6 1/8"
air 3/8"	CEL 50-22-696 CEL 50-22-697 CEL 50-22-698				
air 5/8"	CEL 50-22-687				
air 7/8"	CEL 50-22-677	CEL 50-40-678			
air 1 1/8"	CEL 50-22-667	CEL 50-40-668			
air 1 5/8"	CEL 50-22-657	CEL 50-40-658	CEL 50-80-659		
air 3 1/8"		CEL 50-40-641	CEL 50-80-642	CEL 50-105-643	
air 4 1/8"			CEL 50-80-701	CEL 50-105-702	CEL 50-155-703
air 5"				CEL 50-105-707	CEL 50-155-709
air 6 1/8"					CEL 50-155-712

Air-dielectric cables are suitable for following manufacturers:

- Andrew
- RFS
- SUHNER
- EUPEN
- Nokian

Connectors for Dielectric cables are available on request.

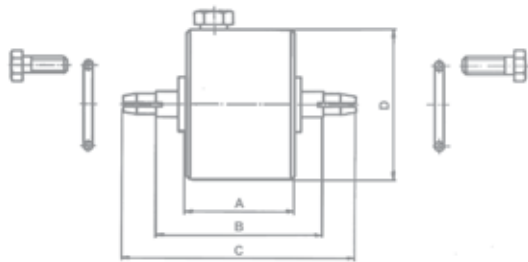
SHORT COUPLING ELEMENTS WITH GASKETS AND SCREWS



CEL 50-80-620

STANDARD		TYPE	CODE	DIMENSIONS (mm)				FLANGE SCREWS			GASKETS
339 IEC	EIA			G	H	K	N	No.	screw	L	
50-22	7/8"	CEL 50-22-616	64521	20,7	23,9	8,66	49	3	M6	30	27 x 3,2
50-40	1 5/8"	CEL 50-40-618	64531	41,8	28,5	16,9	58	4	M8	35	47 x 5,4
50-80	3 1/8"	CEL 50-80-620	64533	81,3	45,0	33,4	80	6	M10	40	85 x 5,4
50-105	4 1/2"	CEL 50-105-622	64535	105,5	45,0	44,8	80	8	M10	40	110 x 6,0
50-155	6 1/8"	CEL 50-155-624	65384	154,0	63,0	66,0	108	12	M12	45	159 x 7,0

GAS BARRIER COUPLING



CEL 50-40-630

STANDARD		TYPE	CODE	DIMENSIONS (mm)				SCREWS	GAS-KETS	GAS INLET VALVE
339 IEC	EIA			A	B	C	D			
50-22	7/8"	CEL 50-22-629	64536	41,1	65,0	90,0	57,0	M6 x 20 6 pcs	27 x 3,2	M12 x 1,5
50-40	1 5/8"	CEL 50-40-630	64537	41,5	72,5	102,5	89,0	M8 x 25 8 pcs	47 x 5,4	M12 x 1,5
50-80	3 1/8"	CEL 50-80-631	64538	43,0	90,0	124,0	128,0	M10 x 30 12 pcs	85 x 5,4	M12 x 1,5
50-105	4 1/2"	CEL 50-105-632	64514	54,6	101,5	135,6	160,0	M10 x 35 16 pcs	110 x 6,0	M12 x 1,5 M18 x 1,5
50-155	6 1/8"	CEL 50-155-634	70030	54,0	118,0	168,0	206,0	M12 x 45 24 pcs	159 x 7,0	M12 x 1,5 M18 x 1,5

GAS INLET VALVES

CODE 65531



CODE 65532



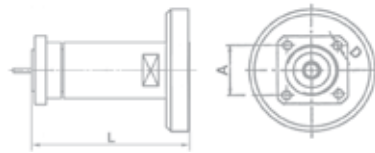
CODE 68220



CODE 70032



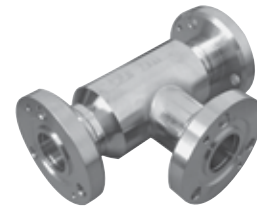
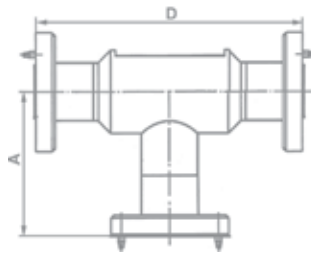
PANEL CONNECTORS



CEL 50-22-051

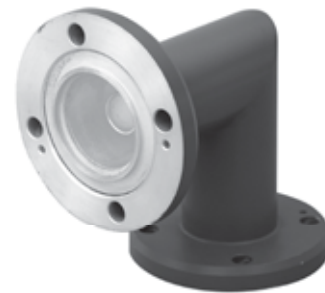
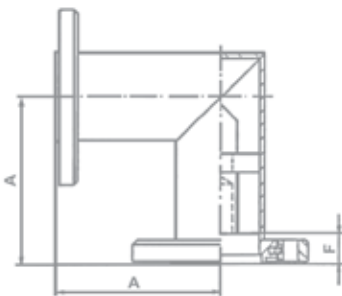
STANDARD		TYPE	CODE	DIMENSIONS (mm)		
339 IEC	EIA			A	D	L
50-22	7/8"	CEL 50-22-051	82182	24,75	3,60	71,00
50-40	1 5/8"	CEL 50-40-052	82183	45,20	4,80	75,00

IN-SERIES T ADAPTER



STANDARD		TYPE	CODE	DIMENSIONS (mm)	
339 IEC	EIA			A	L
50-22	7/8"	CEL 50-22-076	19973	63	140

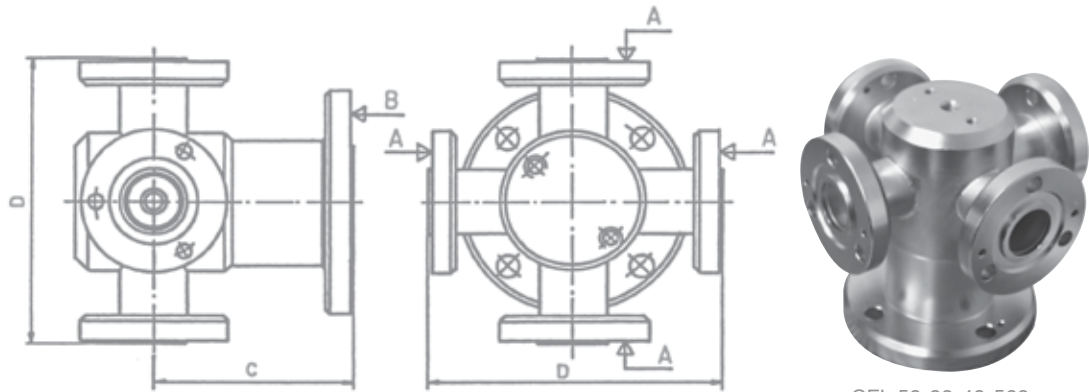
ELBOW ADAPTERS



CEL 50-40-957

STANDARD		FIXED FLANGES		DIMENSIONS (mm)	
339 IEC	EIA	TYPE	CODE	A	F
50-22	7/8"	CEL 50-22-949	64578	58	12,7
50-40	1 5/8"	CEL 50-40-957	92082	84	15,8
50-80	3 1/8"	CEL 50-80-967	73130	100	23,8
50-105	4 1/2"	CEL 50-105-972	83261	125	23,8
50-155	6 1/8"	CEL 50-155-976	95200	150	32,5

MULTIPOINT ADAPTERS



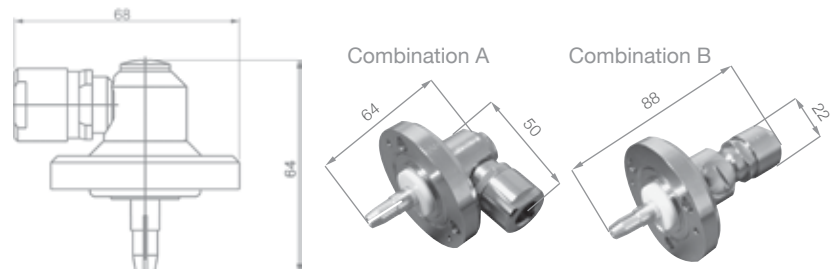
CEL 50-22-40-563

STANDARD		TYPE	CODE	DIMENSIONS (mm)	
A	B			C	D
2 x EIA 7/8"	EIA 7/8"	CEL 50-22-943	83266	65	110
3 x EIA 7/8"	EIA 7/8"	CEL 50-22-944	83267	65	110
4 x EIA 7/8"	EIA 7/8"	CEL 50-22-945	83268	65	110
2 x EIA 7/8"	EIA 1 5/8"	CEL 50-22-40-561	83425	75	110
3 x EIA 7/8"	EIA 1 5/8"	CEL 50-22-40-562	83426	75	110
4 x EIA 7/8"	EIA 1 5/8"	CEL 50-22-40-563	83427	75	110
2 x EIA 1 5/8"	EIA 1 5/8"	CEL 50-40-942	92162	65	130
2 x EIA 1 5/8"	EIA 3 1/8"	CEL 50-40-80-565	79883	75	150
3 x EIA 1 5/8"	EIA 3 1/8"	CEL 50-40-80-566	83428	75	150
4 x EIA 1 5/8"	EIA 3 1/8"	CEL 50-40-80-567	83430	75	150
2 x EIA 3 1/8"	EIA 6 1/8"	CEL 50-80-155-573	95201	on request	
3 x EIA 3 1/8"	EIA 6 1/8"	CEL 50-80-155-574	95202	on request	

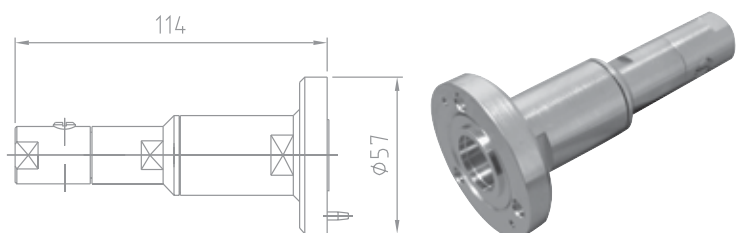
CABLE CONNECTORS

CABLE CONNECTORS, CLAMP, 339 IEC 50-22 (EIA 7/8")

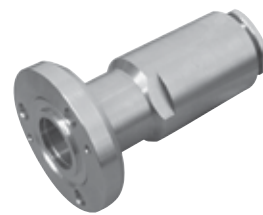
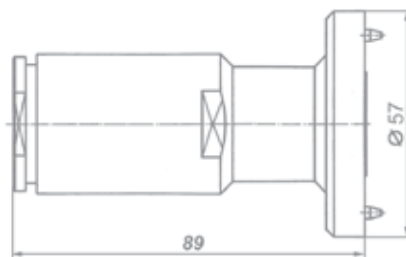
TYPE **CEL 50-22-081**
CODE 60326
WEIGHT 307 g
CABLE TYPE RG 213/U, RG 214/U
REMARK Inner conductor mounted, combination system



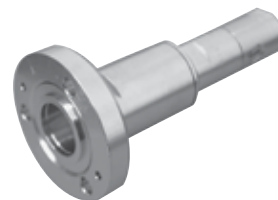
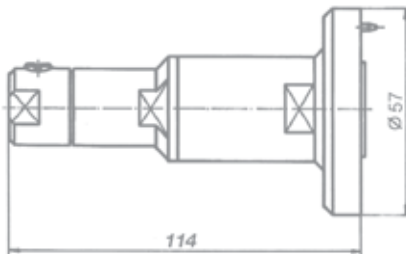
TYPE **CEL 50-22-699**
CODE 52354
WEIGHT 456 g
CABLE TYPE RFF 1/2"-50, CELLFLEX SCF 12-50
REMARK Inner conductor added



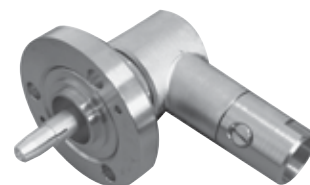
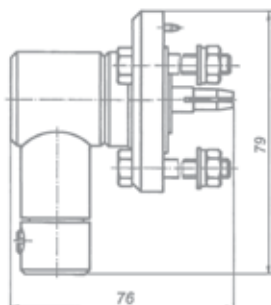
TYPE CEL 50-22-071
CODE 60157
WEIGHT 523 g
CABLE TYPE RG 177/U, RG 218/U
REMARK Inner conductor added



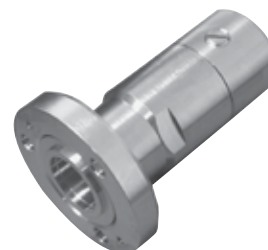
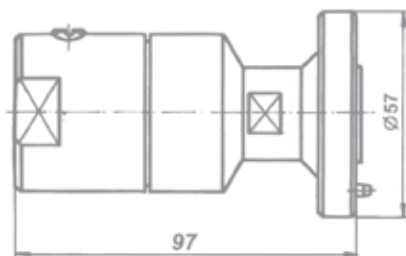
TYPE CEL 50-22-816
CODE 64511
WEIGHT 382 g
CABLE TYPE CELLFLEX LCF 12-50, HELIAX LDF4-50A, RF 1/2"-50, SUCOFEEED 1/2", EUPEN - 5128
REMARK Inner conductor added



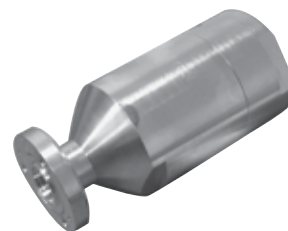
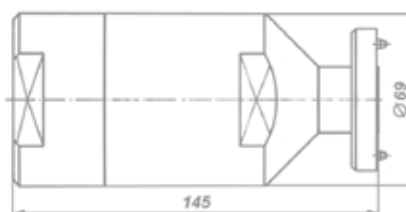
TYPE CEL 50-22-818
CODE 64513
WEIGHT 444 g
CABLE TYPE CELLFLEX LCF 12-50, HELIAX LDF4-50A, RF 1/2"-50, SUCOFEEED 1/2", EUPEN - 5128
REMARK Inner conductor mounted.
 Right angle connector.



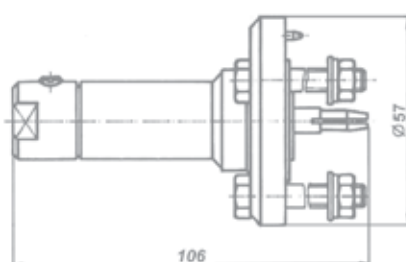
TYPE 1 CEL 50-22-827 and
CODE 1 66328
TYPE 2 CEL 50-22-827/RFS-JA
CODE 2 66333
WEIGHT 445 g
CABLE TYPE CEL 50-22-827 for cables HELIAX LDF5-50A, RF 7/8"-50, SUCOFEEED 7/8", EUPEN - 5228
 CEL 50-22-827/RFS-JA only for CELLFLEX LCF 78-50
REMARK See explanation on page 129



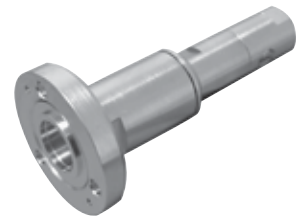
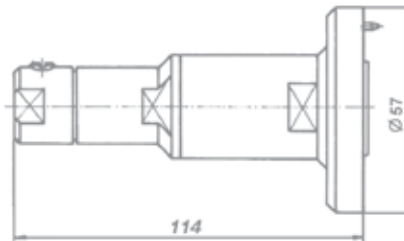
TYPE CEL 50-22-835
CODE 68278
WEIGHT 2.135 g
CABLE TYPE CELLFLEX LCF 158-50, HELIAX LDF7-50A, RF 1 5/8"-50, SUCOFEEED 1 5/8", EUPEN - 5438
REMARK Inner conductor added



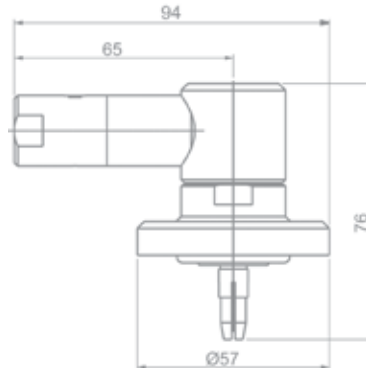
TYPE CEL 50-22-696
CODE 70117
WEIGHT 356 g
CABLE TYPE HELIFLEX HCA 38-50
REMARK Inner conductor mounted



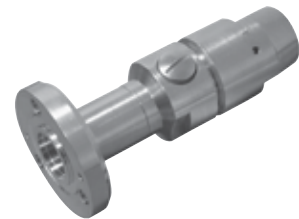
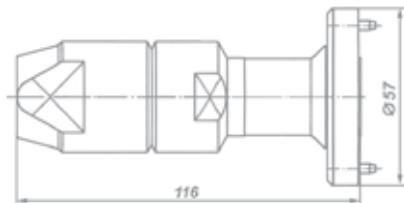
TYPE CEL 50-22-697
CODE 64943
WEIGHT 398 g
CABLE TYPE HELIFLEX HCA 38-50
REMARK Inner conductor added



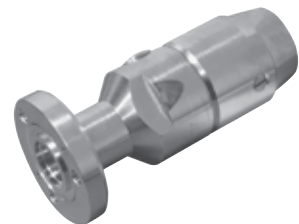
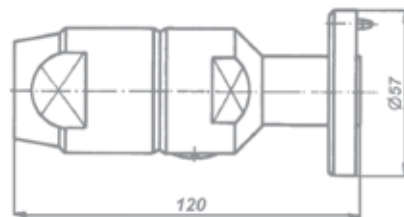
TYPE CEL 50-22-698
CODE 99677
WEIGHT 456 g
CABLE TYPE HELIFLEX HCA 38-50
REMARK Inner conductor mounted.
Right angle connector.



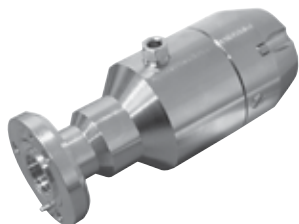
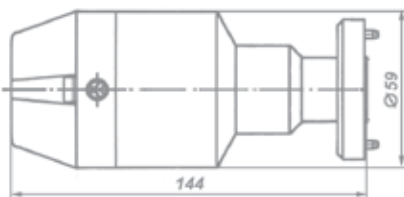
TYPE CEL 50-22-687
CODE 64645
WEIGHT 557 g
CABLE TYPE HELIFLEX HCA 58-50,
HELIAX HJ4.5-50
REMARK Inner conductor added.
Connector with gas barrier and
gas inlet valve M10 x 0,75



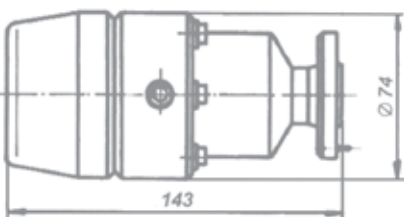
TYPE CEL 50-22-677
CODE 64643
WEIGHT 811 g
CABLE TYPE HELIFLEX HCA 78-50, HELIAX HJ5-50
REMARK Inner conductor added.
Connector with gas barrier and
gas inlet valve M10 x 0,75



TYPE CEL 50-22-667
CODE 84469
WEIGHT 1.622 g
CABLE TYPE HELIFLEX HCA 118-50
REMARK Inner conductor added.
Connector with gas barrier and
gas inlet valve M12 x 1,5

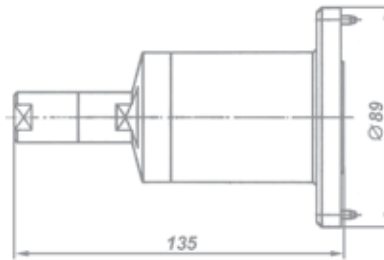


TYPE CEL 50-22-657
CODE 64358
WEIGHT 2.210 g
CABLE TYPE HELIFLEX HCA 158-50
REMARK Inner conductor added.
Connector with gas barrier and
gas inlet valve M12 x 1,5

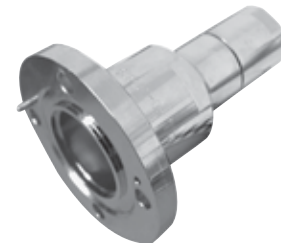
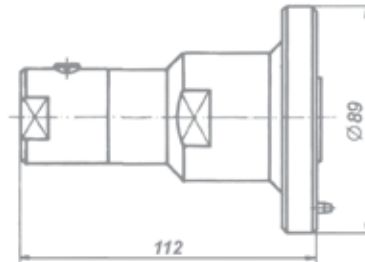


CABLE CONNECTORS, CLAMP, 339 IEC 50-40 (EIA 1 5/8")

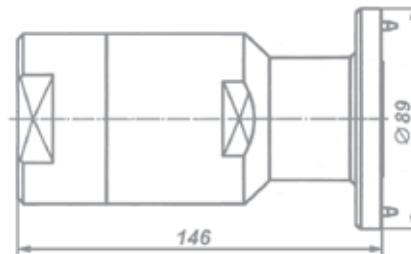
TYPE CEL 50-40-820
CODE 76810
WEIGHT 1.110 g
CABLE TYPE CELLFLEX LCF 12-50,
 HELIAX LDF4-50A, RF 1/2"-50,
 SUCOFEEED 1/2", EUPEN - 5128
REMARK Inner conductor added



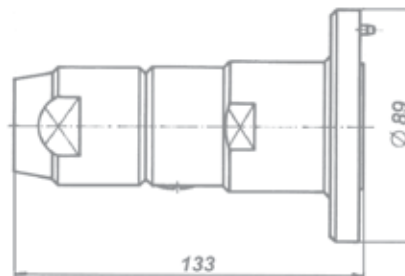
TYPE 1 CEL 50-40-828 and
CODE 1 66331
TYPE 2 CEL 50-40-828/RFS-JA
CODE 2 66336
WEIGHT 868 g
CABLE TYPE CEL 50-40-828 for cables
 HELIAX LDF5-50A, RF 7/8"-50,
 SUCOFEEED 7/8", EUPEN - 5228
 CEL 50-40-828/RFS-JA
 only for CELLFLEX LCF 78-50
REMARK See explanation on page 129



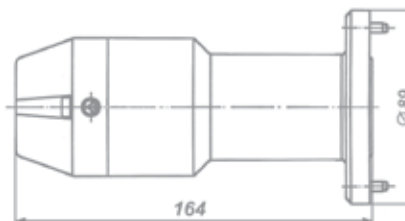
TYPE CEL 50-40-836
CODE 67301
WEIGHT 2.227 g
CABLE TYPE CELLFLEX LCF 158-50,
 HELIAX LDF7-50A, RF 1 5/8"-50,
 SUCOFEEED 1 5/8", EUPEN - 5438
REMARK Inner conductor added



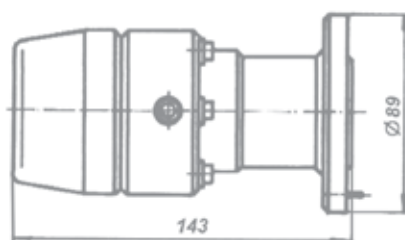
TYPE CEL 50-40-678
CODE 66330
WEIGHT 1.250 g
CABLE TYPE HELIFLEX HCA 78-50,
 HELIAX HJ5-50
REMARK Inner conductor added.
 Connector with gas barrier and
 gas inlet valve M10 x 0,75



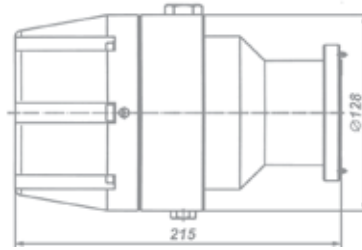
TYPE CEL 50-40-668
CODE 64941
WEIGHT 2.200 g
CABLE TYPE HELIFLEX HCA 118-50
REMARK Inner conductor added.
 Connector with gas barrier and
 gas inlet valve M12 x 1,5



TYPE CEL 50-40-658
CODE 64203
WEIGHT 2.477 g
CABLE TYPE HELIFLEX HCA 158-50
REMARK Inner conductor added.
 Connector with gas barrier and
 gas inlet valve M12 x 1,5

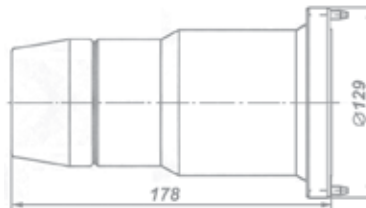


TYPE	CEL 50-40-641
CODE	72677
WEIGHT	7.500 g
CABLE TYPE	HELIFLEX HCA 318-50
REMARK	Inner conductor added. Connector with gas barrier and gas inlet valve M12 x 1,5

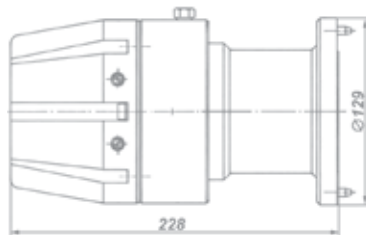


CABLE CONNECTORS, CLAMP, 339 IEC 50-80 (EIA 3 1/8")

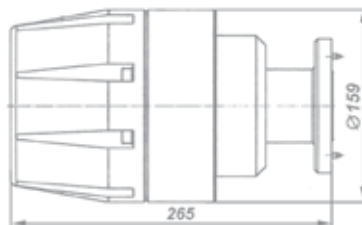
TYPE	CEL 50-80-659
CODE	66244
WEIGHT	3.670 g
CABLE TYPE	HELIFLEX HCA 158-50
REMARK	Inner conductor added. Connector with gas barrier and gas inlet valve M12 x 1,5



TYPE	CEL 50-80-642
CODE	64942
WEIGHT	9.600 g
CABLE TYPE	HELIFLEX HCA 318-50
REMARK	Inner conductor added. Connector with gas barrier and gas inlet valve M12 x 1,5

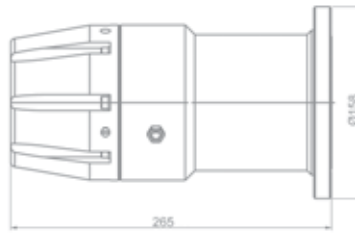


TYPE	CEL 50-80-701
CODE	72477
WEIGHT	14.100 g
CABLE TYPE	HELIFLEX HCA 418-50
REMARK	Inner conductor added. Connector with gas barrier and gas inlet valves M12 x 1,5 and M18 x 1,5

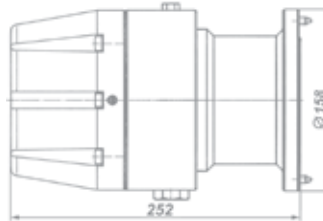


CABLE CONNECTORS, CLAMP, 339 IEC 50-105 (EIA 4 1/2")

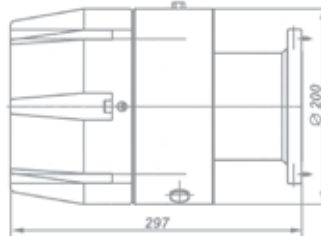
TYPE CEL 50-105-643
CODE 98287
WEIGHT 11.000 g
CABLE TYPE HELIFLEX HCA 318-50
REMARK Inner conductor added.
 Connector with gas barrier and gas inlet valves M12 x 1,5



TYPE CEL 50-105-702
CODE 64944
WEIGHT 14.600 g
CABLE TYPE HELIFLEX HCA 418-50
REMARK Inner conductor added.
 Connector with gas barrier and gas inlet valves M12 x 1,5 and M18 x 1,5

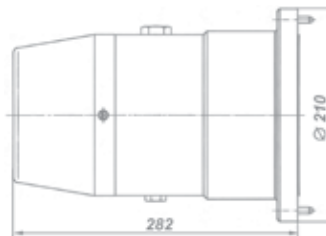


TYPE CEL 50-105-707
CODE 82494
WEIGHT 15.500 g
CABLE TYPE HELIFLEX HCA 500-50
REMARK Inner conductor added.
 Connector with gas barrier and gas inlet valves M12 x 1,5 and M18 x 1,5

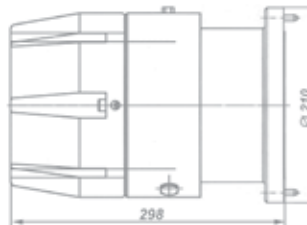


CABLE CONNECTORS, CLAMP, 339 IEC 50-155 (EIA 6 1/8")

TYPE CEL 50-155-703
CODE 74745
WEIGHT 15.900 g
CABLE TYPE HELIFLEX HCA 418-50
REMARK Inner conductor added.
 Connector with gas barrier and gas inlet valves M12 x 1,5 and M18 x 1,5



TYPE CEL 50-155-709
CODE 82495
WEIGHT 17.500 g
CABLE TYPE HELIFLEX HCA 500-50
REMARK Inner conductor added.
 Connector with gas barrier and gas inlet valves M12 x 1,5 and M18 x 1,5



TYPE CEL 50-155-712
CODE 66447
WEIGHT 19.800 g
CABLE TYPE HELIFLEX HCA 618-50
REMARK Inner conductor added.
 Connector with gas barrier and gas inlet valves M12 x 1,5 and M18 x 1,5

